



## INFERNO CUSTOM CHASSIS

The flagship of the Ferrara custom chassis line, the Inferno set the standard for crew safety and apparatus performance. Featuring a big block engine, the Inferno offers the maximum power for any extreme situation. This chassis is completely customizable with many different cab, seating, and equipment configurations available.

### STANDARD FEATURES

Fully customizable cab and chassis

100" wide 3/16" thick extruded aluminum cab

Cummins ISX12 & X15 engines with 4000EVS transmission

Cabs are built from extruded aluminum and 3/16" thick marine grade aluminum plate

Reinforced roll cage provides extra occupant protection

Single channel, heat treated frame rails

Entire frame and running gear assembly is painted high gloss black as standard, with option for custom colors and "F-Shield" protection

Reinforced bumper extension and a 3/8" thick radiator skid plate

Gloss paint finish protects the chassis from the elements and guards against corrosion - optional F-Shield available

Crash testing exceeds the standards specified by ECE-R29

Maximum visibility with 4,200 square inch windshield and 43-degree view

Low-rise engine tunnel keeps the cab clean and clear

10 year or 100,000 miles warranty on cab and chassis



## OPTIONS



Black out package



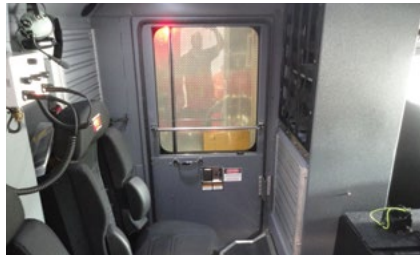
Barrier cab doors



Custom map book holders



Custom wall equipment storage



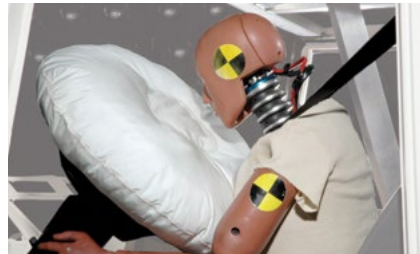
Custom interior compartments



Custom front bumper storage,  
hose and equipment



Double and triple channel, heat  
treated frame rails



CAP+ Complete Airbag  
Protection System



F-Shield Corrosion Protection

